

EW-LP28 Series Datasheet

1 Product Name: EW-LP28 Series waterproof connectors



Male Plug
Plastic+Metal



Female Socket
Plastic+Metal



Flange Female Socket
Plastic

2 Materials and Processes

Part Categories	Material	Processes
Contact	Male Pin: Copper Alloy	Silver Plating
	Female Pin: Copper Alloy	
Housing	PBT/Zinc Alloy	Injection Molding/Die Casting
Insulator	PBT	Injection Molding
Seal	Silicone	Solid State Pressing

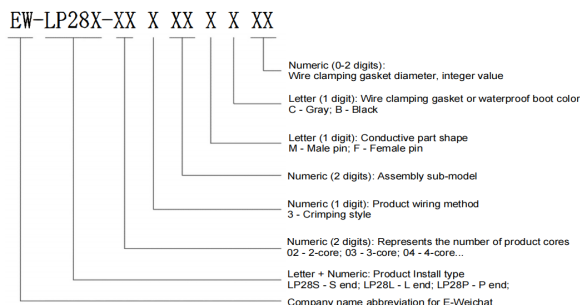
3 Product Introduction

This product's technical performance complies with international standards such as UL, TUV; the male and female with one key pluggable design, which has the advantages of safe and secure locking, smooth plugging and unplugging, and the number of repeat plugging and unplugging can reach more than 600 times; the shell is made of high-performance engineering plastic, ensuring the product has stable electrical performance, as well as excellent physical and chemical properties such as high-temperature resistance and corrosion resistance; at the same time, the conductive parts adopt gold plating technology, with excellent conductivity, and can meet the product temperature rise requirements even in high-temperature environments.

This series of products offers a variety of models, providing 2 to 5 core numbers for users to choose from.

Applicable standards: Compliant with UL, TUV, and other standards

3.1 Product Coding Rules

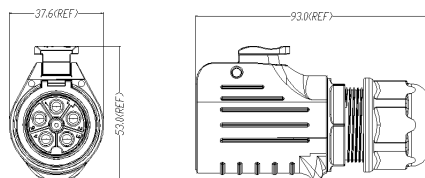


3.2 Installation Requirements

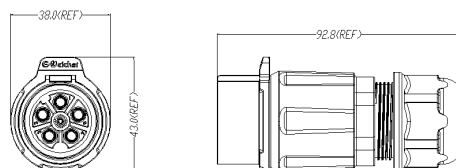
3.2.1 Crimp Style: The conductor and the product are connected using a crimping method. 3.2.2

Product Outer Dimensions and Mounting Dimensions as Follows: :

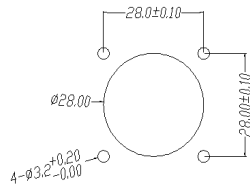
- EW-LP28S-#P



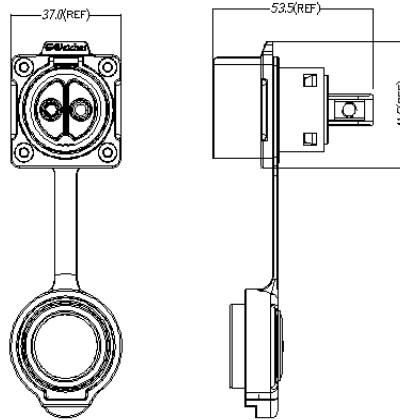
- EW-LP28L-#P





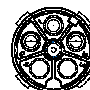

● EW-LP28P-#P



安装孔尺寸
Mounting Hole Dimensions



4 Product Performance

Part Number		LP28-2P	LP28-3P	LP28-3P		LP28-5P	
Image							
Contact		4. 0*2	4. 0*3	3. 5*3	1. 5	3. 5*5	1. 5
Wiring Method	Crimping	×	×	√		√	
	Screw	√	√	×		×	
Wire Gauge		10mm ²		2. 5mm ² , 6mm ²	0. 5mm ²	2. 5mm ² , 6mm ²	0. 5mm ²
Rated Current		50A		16A , 32A	3A	16A , 32A	3A
Operating Voltage		500V		480V	/	480V	/
Withstand Voltage		AC 2500V		AC 2500V	/	AC 2500V	/
Contact Resistance		<1mΩ					
Temperature Rise		50A ≤45K		16A ≤45K , 32A ≤45K			
Insulation Resistance		>1000MΩ					
Mechanical Life		>600times					
Ambient Temperature		-40~+85 ℃					
High-Temperature Aging		85 ℃ / 168 h					
Salt Spray Test		PH6. 5-7. 2, NaCl, 5% 48h					
IP Rating		IP67 (Option: IP68 1m /2h)					
(OD)		(ø16. 5-ø18. 5)mm Single Hole ø19. 0mm		(ø10. 5-ø16. 5)mm (Single Holeø13. 5mm、Single Holeø17. 0mm)			