



Material and Process

Part Category	Material	Process
Contact	Copper alloy	Stamping
	Gold-Plated	
Housing	PBT	Injection molding
	Zinc Alloy	Die casting
Insulator	PBT	Injection molding
Seal	Silicone Rubber	Hot pressing

Product Description

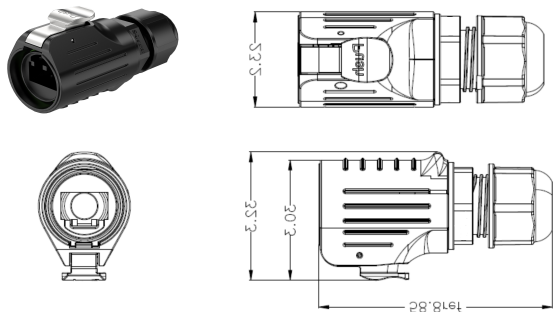
This product is a custom waterproof industrial RJ45 connector developed based on our company's LP16 outdoor waterproof connector. It complies with TIA/EIA-568-B and ISO/IEC 11801 standards and meets CAT5e specifications, making it suitable for any harsh outdoor environment. Compared to traditional waterproof RJ45 cable connectors, it offers one-handed operation for quick plugging and unplugging, saving time on the connector; a button lock design provides more stability than traditional signal connectors; a robust die-cast housing and unique cable clamp; the cable connector carrier jacket does not include the crystal head; in commercial applications, it protects Ethernet connections and this design can protect the components inside a standard RJ45 plug.

Product properties

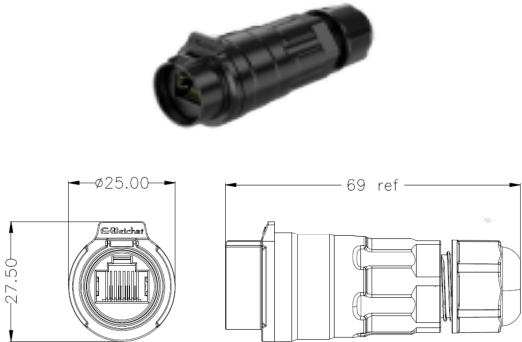
Wiring Method	Crystal head adapter
Wire Gauge	26 AWG
Rated Current	1.5A
Operating Voltage	125 V AC
Withstand Voltage	1000V AC
Contact Resistance	<50mΩ
Insulation Resistance	≥100MΩ
Mechanical Life	≥1900次
Ambient Temperature	-40~+85℃
High-temperature Aging	85℃ /168 h
Salt Spray Test	PH6.5-7.2, NaCl, 5% 48h
IP Rating	IP67 (1m /0.5h)
OD	(ø4.0 -ø6.5)mm

The product external dimensions and cutout dimensions are as follows:

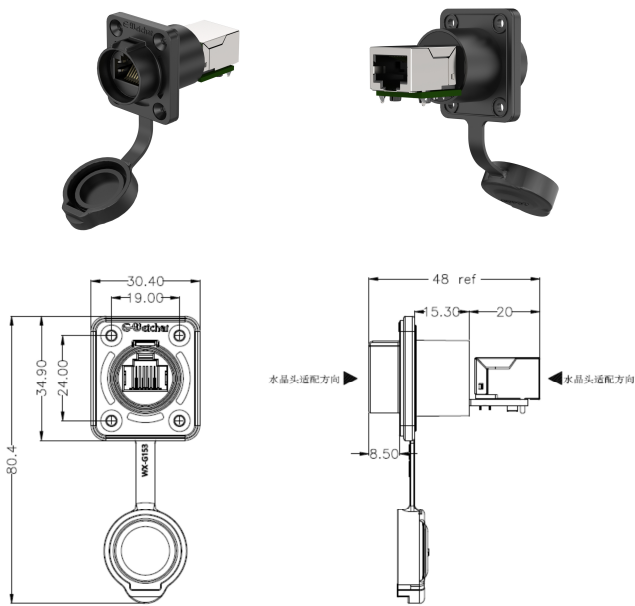
Cable Mount Plug



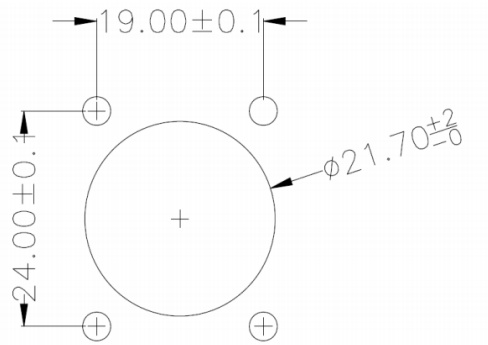
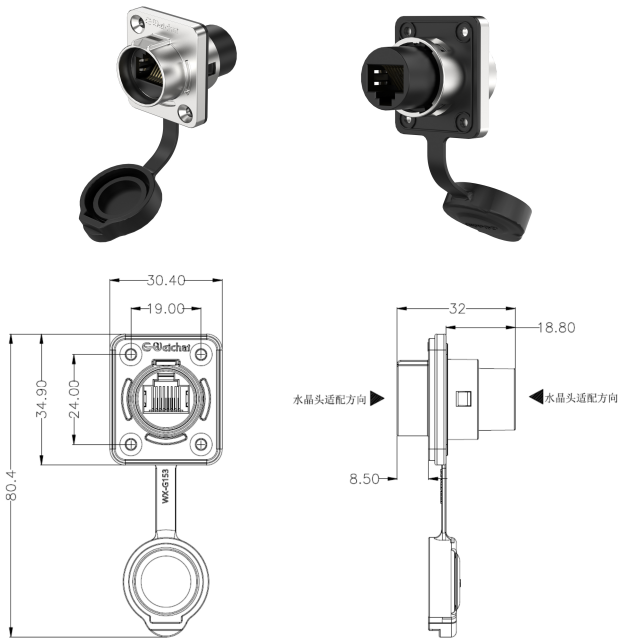
Cable Mount Socket



Plastic Flange-Mounted Dual Duplex Socket



Metal Flange-Mounted Dual Duplex Socket



Cut-Out Size